

ST24 (A374)

This parts catalog includes MB No1.

PARTS CATALOG

INTRODUCTION

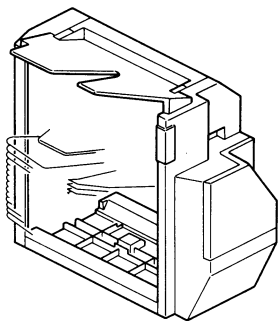
This chapter instructs you the numbers and names of this parts on this machine.

INDEX to PARTS CATALOG

Location of Unit	3
1. Exterior (A374)	4
2. TransportSection (A374)	6
3. Staple Section (A374)	8
4. Drive and Electrical Section (A374)	10
5. Frame Section (A374)	12
6. CopyTray Section (A374)	14
Parts index	17

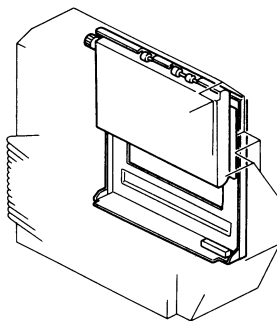
LOCATION OF UNIT

1. EXTERIOR (A374)



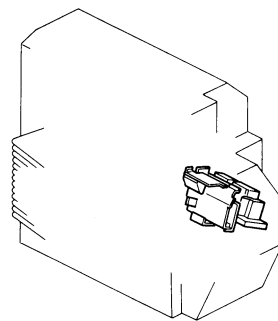
See Page 4

2. TRANSPORT SECTION (A374)



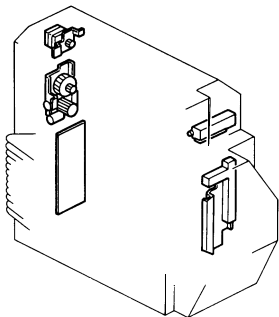
See Page 6

3. STAPLE SECTION (A374)



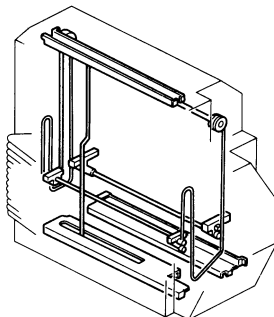
See Page 8

4. DRIVE AND ELECTRICAL SECTION (A374)



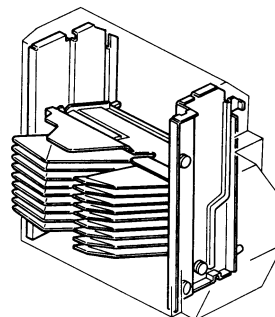
See Page 10

5. FRAME SECTION (A374)



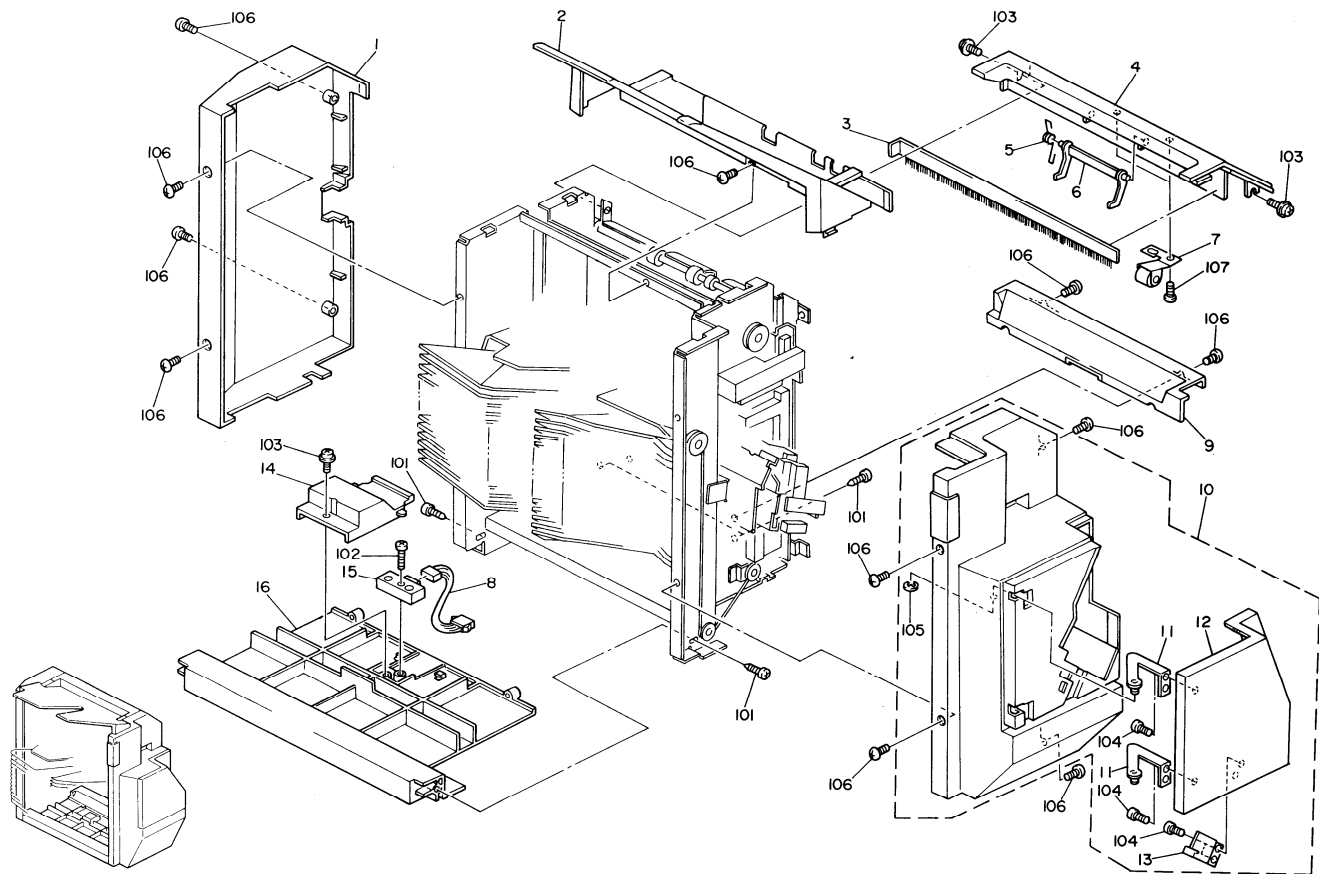
See Page 12

6. COPY TRAY SECTION (A374)



See Page 14

1. EXTERIOR (A374)



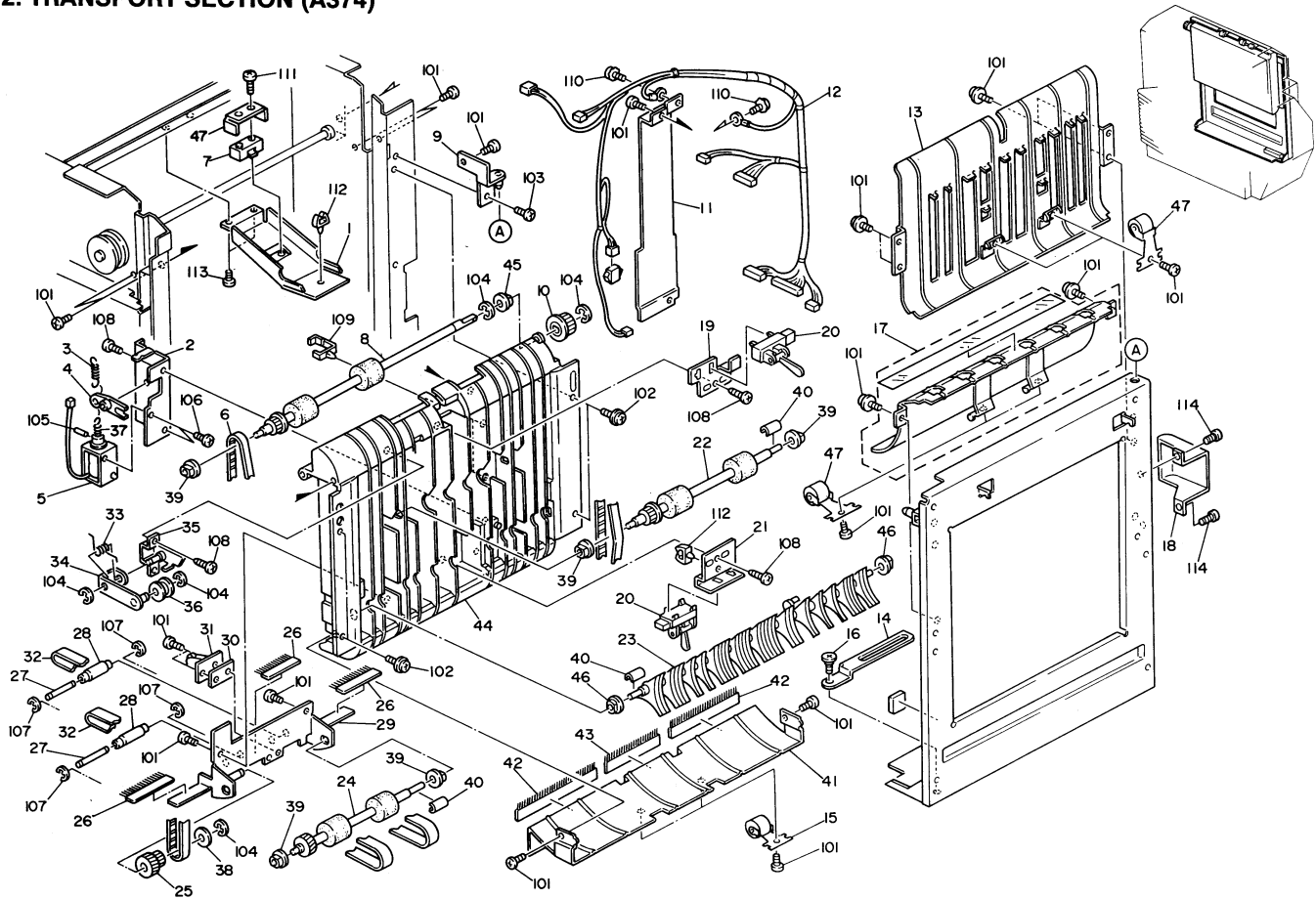
1. EXTERIOR (A374)

Index No.	Part No.	Description	Q'ty Per Assembly
1	A374 1541	Rear Cover	1
2	A374 1571	Proof Tray	1
3	AA12 0055	Antistatic Brush - 367mm	1
4	A374 1561	Upper Cover	1
5	AA06 6198	Proof Lever Spring	1
6	A374 2251	Proof Lever	1
7	A374 2141	Plate Spring - Upper Cover	2
8	A374 5250	Relay Harness - Bin Sensor	1
9	A374 1591	Lower Harness Cover	1
10	A374 1600	Front Cover Ass'y	1
11	A374 1611	Hinge - Front Cover Cap	2
12	A374 1531	Front Cover Cap	1
13	A374 4556	Safety Switch Actuator	1
14	A374 3570	Sensor Cover	1
15	AW02 0025	Lower Bin/jam Sensor	1
16	A374 1511	Bottom Cover	1
17	A498 1831	Staple Position Decal MB1 (ADDED)	1
18	A374 1861	Decal - Misfeed Removal MB1 (ADDED)	1
19	A374 1871	Decal - Staple Misfeed MB1 (ADDED)	1
20	A374 1881	Decal - Add Staple MB1 (ADDED)	1
21	A374 1855	Decal - Staple Position MB1 (ADDED)	1

Index No.	Part No.	Description	Q'ty Per Assembly
101	0434 0062B	Tapping Screw M4x6	
102	0313 0160B	Phillips Pan Head Screw - M3x16	
103	0951 4008B	Phillips Screw With Washer - M4x8	
104	0434 0060B	Phillips Tapping Screw - M4x6	
105	0720 0040E	Retaining Ring - M4	
106	0344 0060F	Phillips Truss Head Screw - M4x6	
107	0434 0084B	Tapping Screw - M4x8	



2. TRANSPORT SECTION (A374)

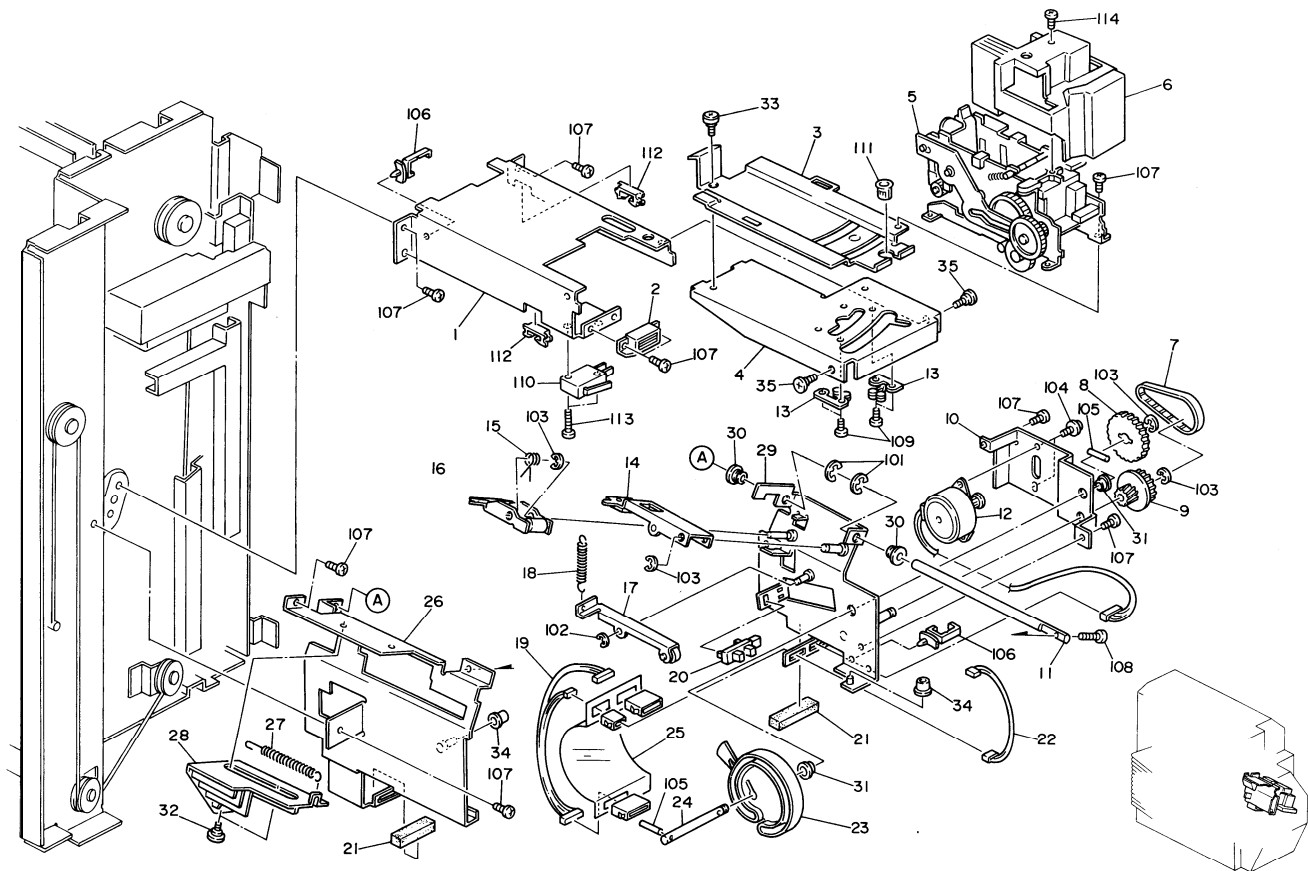


2. TRANSPORT SECTION (A374)

Index No.	Part No.	Description	Q'ty Per Assembly
1	A374 3560	Large Cover - Upper Sensor	1
2	A374 2155	Transport Solenoid Bracket	1
3	AA06 0488	Spring - Junction Gate	1
4	A374 2168	Solenoid Lever	1
5	AX11 0035	Solenoid - 24v 4.6w	1
6	AA04 3201	Timing Belt - 280XL	1
7	AW02 0026	Upper Bin/jam Sensor	1
8	AF02 0270	Upper Exit Roller	1
9	A374 1191	Upper Hinge	1
10	AB03 0387	Pulley - 34Z	1
11	A374 2152	Upper Transport Bracket	1
12	A374 5230	Transport Harness	1
13	A374 2121	Entrance Guide Plate - Upper	1
14	A374 1146	Lower Stopper	1
15	A374 2163	Spring Plate - Lower Transport MB1	2
16	52011796	Stepped Screw - M4	1
17	A374 2131	Entrance Guide Plate - Lower	1
18	A374 1551	Harness Cover	1
19	A374 2182	Bracket - Upper Exit Sensor	1
20	AW02 0049	Photointerruptor - OS - 580213-703	2
21	A374 2183	Bracket - Lower Exit Sensor	1
22	AF02 0272	Relay Roller	1
23	A374 2161	Junction Pawl	1
24	AF02 0271	Lower Exit Roller	1
25	AB01 7273	Sprocket/gear - 16/20Z	1
26	AA12 0054	Antistatic Brush - 50mm	3
27	A374 2548	Exit Roller Shaft	2
28	A374 2546	Exit Roller	2
29	A374 2154	Transport Unit Bracket	1
30	A374 3562	Small Cover - Upper Sensor	1
31	A374 2331	Bin Supportor	1
32	A374 2547	Exit Belt	2
33	AA06 6196	Tension Spring	1
34	A374 2200	Tension Arm	1
35	A374 2190	Tightener Bracket	1

Index No.	Part No.	Description	Q'ty Per Assembly
36	A374 2207	Pullev - 12M	1
37	AA06 0489	Spring - Solenoid	1
38	A374 2186	Flange - 16Z/20T	1
39	AA08 0141	Bushing - 5x12x4mm	5
40	A374 2181	Spacer	3
41	A374 2135	Lower Guide Plate Ass'y	1
42	AA12 0053	Antistatic Brush - 112mm	1
43	AA12 0052	Antistatic Brush - 62mm	2
44	A374 2151	Vertical Paper Guide	1
45	AA08 0071	Bushing -6X10X6	1
46	H014 2131	Bushing - M4	2
47	A374 2140	Guide Roller MB1 (ADDED)	4
101	0434 0060B	Philips Tapping Screw - M4x6	
102	0951 4008B	Philips Screw Wtih Washer- M4x8	
103	0314 0080B	Philips Pan Head Screw - M4x8	
104	0720 0040E	Retaining Ring - M4	
105	0623 0100E	Spring Pin - 3x10mm	
106	0313 0040B	Philips Pan Head Screw - M3x4	
107	0720 0030E	Retaining Ring - M3	
108		M4x6	
109			
110	0953 4008M	Screw - M4x8	
111	0313 0160B	Philips Pan Head Screw - M3x16	
112	1105 0234	Clamp	
113	0314 0040B	Philips Pan Head Screw - M4x4	
114	0344 0060F	Philips Truss Head Screw - M4x6	

3. STAPLE SECTION (A374)

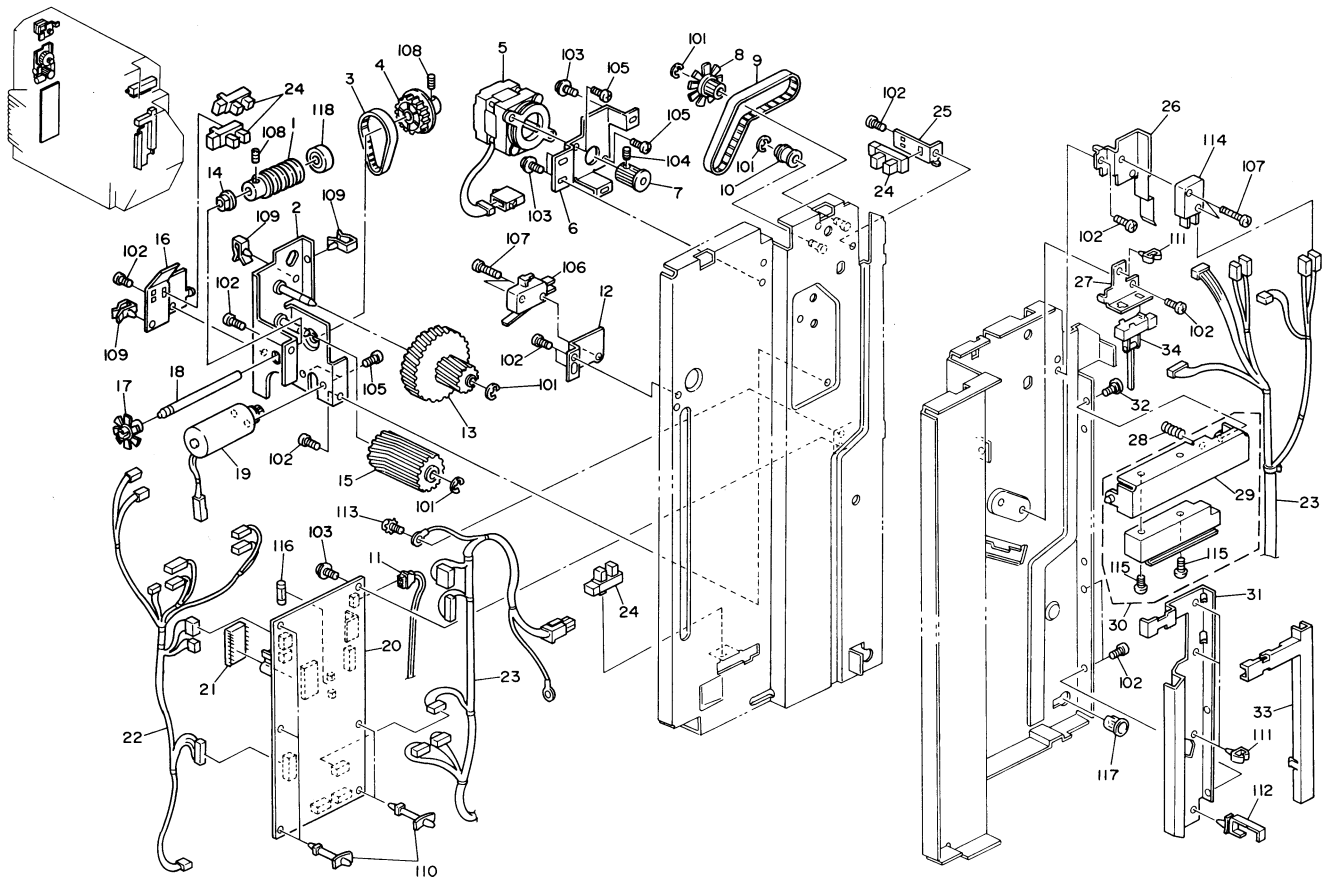


3. STAPLE SECTION (A374)

Index No.	Part No.	Description	Q'ty Per Assembly
1	A374 4521	Stapler Bracket	1
2	5054 0536	Magnet Catch Ass'y	1
3	A374 4531	Stapler Plate	1
4	A374 4522	Stapler Rotation Bracket	1
5	AJ01 1005	Stapler Unit	1
6	A374 4551	Stapler Cover	1
7	AA04 3205	Timing Belt - 83XL	1
8	AB01 1142	Gear -592	1
9	AB01 7275	Coupled Gear - 20/482	1
10	A374 4631	Small Side Plate	1
11	A374 4681	Gripper Shaft	1
12	AX04 0056	Stepping Motor - DC9.5V 9.0W	1
13	5409 1238	Rotary Catch	2
14	A374 4651	Upper Gripper Arm	1
15	AA06 6197	Lower Pawl Spring	1
16	A374 4656	Lower Gripper Arm	1
17	A374 4641	Cam Follower	1
18	AA06 0491	Upper Pawl Spring	1
19	A374 5210	Gripper Harness	1
20	AW02 0021	Photointerruptor - 175487-3	1
21	A374 4688	Gripper Connector Cushion	2
22	A374 5220	Gripper Relay Harness	1
23	A374 4666	Drive Cam	1
24	A374 4636	Drive Shaft	1
25	A374 4686	Connector Holder	1
26	A374 4611	Gripper Bracket	1
27	AA06 0492	Jogger Stopper Spring	1
28	A374 4616	Jogger Stopper	1
29	A374 4621	Large Side Plate	1
30	AA08 2042	Bushing - 6x10x6.5mm	2
31	AA08 0072	Bushing - 6x10X3	2
32	5201 1796	Stepped Screw - M4	2
33	AA14 3062	Shoulder Screw - M4	1
34	AA08 0074	Bushing - 4x6x6	2
35	5442 1659	Stepped Screw - M4	2

Index No.	Part No.	Description	Q'ty Per Assembly
101	0720 0080E	Retaining Ring - M8	
102	0720 0025E	Retaining Ring - M2.5	
103	0720 0040E	Retaining Ring - M4	
104	0951 3006B	Philips Screw With Washer- M4x6	
105	0632 0140G	Parallel Pin	
106	1105 0310	Wire Clamp	
107	0434 0060B	Philips Tapping Screw - M4x6	
108	0313 0080B	Philips Pan Head Screw - M3x8	
109	0313 0050B	Philips Pan Head Screw - M3x5	
110	1204 2188	Interlock Switch	
111	1106 0241	Bushing - 6.7mm	
112	1105 0234	Clamp	
113	0313 0140B	Philips Pan Head Screw - M3x14	
114	0413 0084W	Tapping Screw M3x8	

4. DRIVE AND ELECTRICAL SECTION (A374)

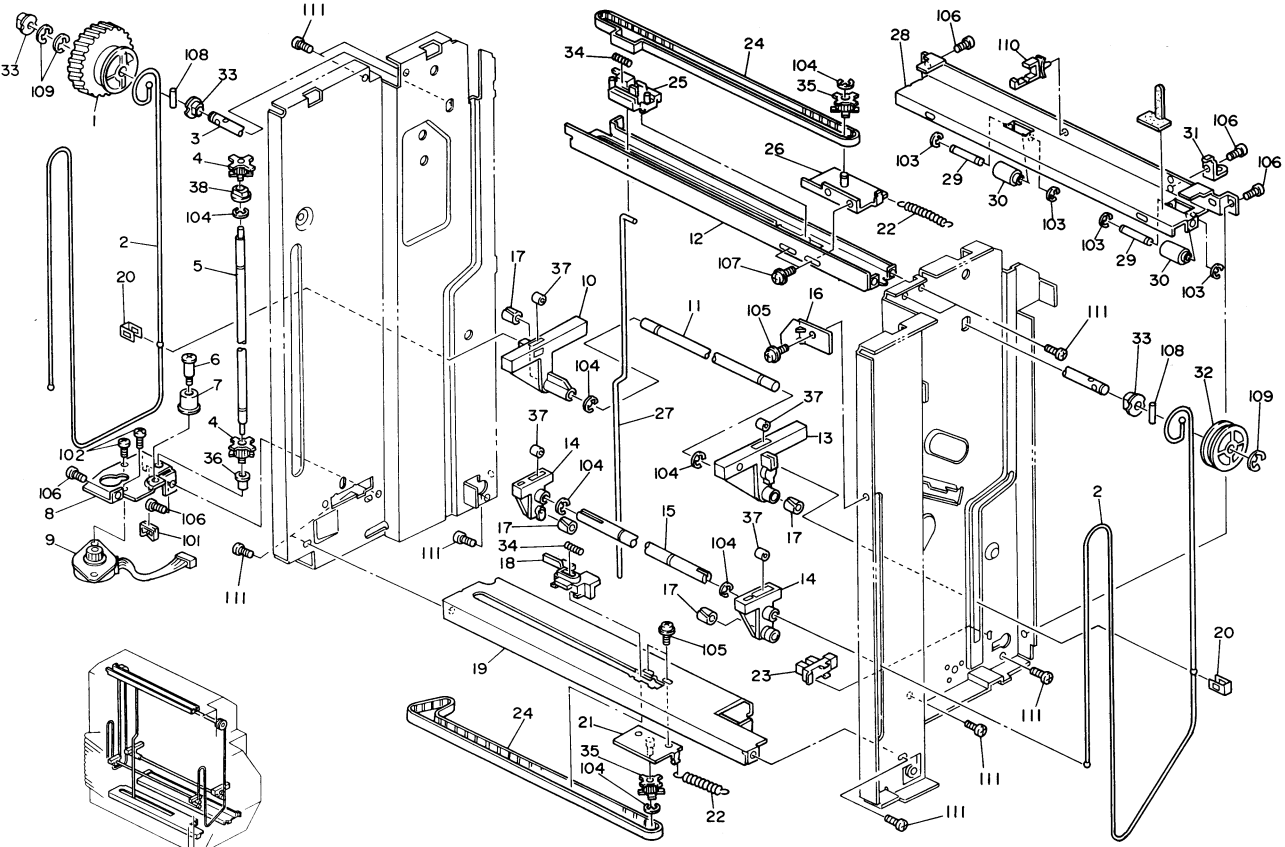


4. DRIVE AND ELECTRICAL SECTION (A374)

Index No.	Part No.	Description	Q'ty Per Assembly
1	AB01 3709	Worm Gear	1
2	A374 3111	Bin Drive Bracket	1
3	AA04 3203	Timing Belt - 77XL	1
4	AB03 0399	Pulley - 52Z	1
5	AX05 0057	Stepping Motor - DC 24V 3.84W	1
6	A374 2237	Stepping Motor Bracket	1
7	AB03 0386	Pulley - 40Z	1
8	A374 2216	Encoder	1
9	AA04 3202	Timing Belt - 145XL	1
10	A374 2218	Pulley - 12M	1
11	AW03 0028	Fiber Cable	1
12	A374 3187	Limit Switch Bracket -Upper	1
13	AB01 3731	Gear-54Z	1
14	5053 0447	Bushing-6mm	2
15	AB01 3730	Gear - 18Z	1
16	A374 3126	Bin Sensor Bracket	1
17	A374 3115	Encoder Disk	1
18	A374 3120	Worm Gear Shaft	1
19	AX05 0058	DC Motor-24V9W	1
20	A374 5100	Main Control Board	1
21	A374 5103	IC - AM27C256-205DC	1
22	A374 5240	Bin Sensor Harness	1
23	A374 5200	Main Harness	1
24	AW02 0021	Photointerruptor - 175487-3	4
25	A374 2234	Encoder Sensor Bracket	1
26	A374 1195	Door Switch Bracket	1
27	A374 4711	Gripper Sensor Bracket	1
28	AA06 3239	Spring - Handle	1
29	A374 1625	Opening Handle Bracket	1
30	A374 1700	Opening Handle Ass'y	1
31	A374 1622	Bin Shaft Cover - Front	1
32	AA14 3306	Stepped Screw - M6	1
33	A374 1623	Harness Cover	1
34	A374 5600	Photointerrupter - OS-580213-704	1

Index No.	Part No.	Description	Q'ty Per Assembly
101	0720 0040E	Retaining Ring - M4	
102	0434 0060B	Philips Tapping Screw - M4x6	
103	0951 4006B	Philips Screw With Washer - M4x6	
104	0574 0030E	Hexagonal Set Screw - M4x3	
105	0313 0050B	Philips Pan Head Screw - M3x5	
106	1204 2233	Microswitch -AH715254N	
107	0313 0140B	Philips Pan Head Screw - M3x14	
108	0574 0040E	Hexagon Headless Set Screw - M4x4	
109	1105 0267	Wire Clamp	
110	1105 0163	Locking Support	
111	1105 0234	Clamp	
112	1105 0291	Wire Saddle	
113	0953 4008M	Screw - M4x8	
114	1204 2188	Interlock Switch	
115	0344 0060F	Philips Truss Head Screw - M4x6	
116	1107 0748	Fuse - 2A, 250V	
117	1106 0241	Bushing - 6.7mm	
118	0740 3206	Ball Bearing	

5. FRAME SECTION (A374)

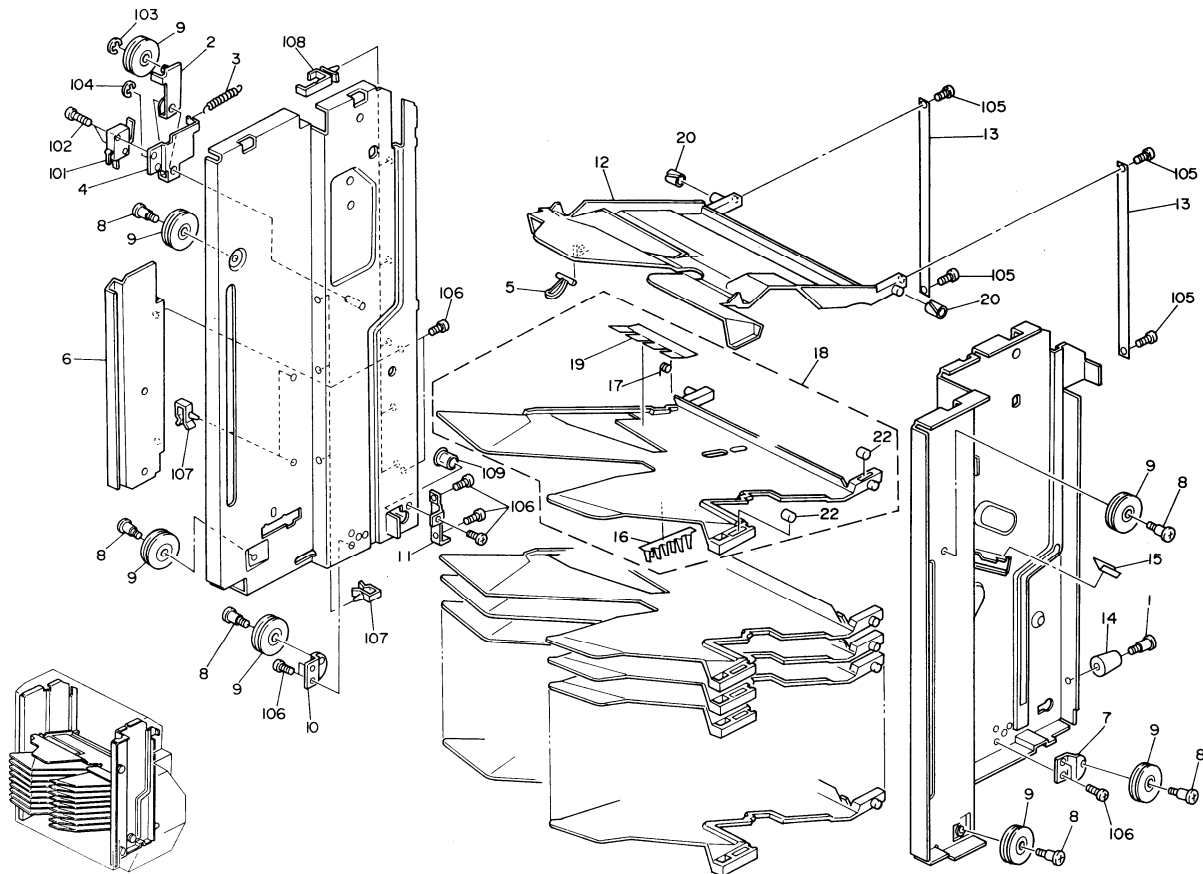


5. FRAME SECTION (A374)

Index No.	Part No.	Description	Q'ty Per Assembly
1	AB01 7274	Gear - 54Z	1
2	AA05 0076	Bin Drive Wire	2
3	A374 3131	Wire Lift Shaft	1
4	AB03 0389	Pulley- 16Z	2
5	A374 4124	Jogger Drive Shaft	1
6	A469 3175	Idle Pulley Stud - Short	1
7	5887 4185	Idler Pulley	1
8	A374 4141	Jogger Motor Bracket	1
9	AX04 0057	Stepping Motor - DC 24V 3.72W	1
10	A374 3146	Bin Support Block - Right Rear	1
11	A374 3160	Bin Block Shaft - Right	1
12	A374 1131	Upper Jogger Stay	1
13	A374 3142	Bin Support Block - Right Front	1
14	A374 3156	Bin Support Block - Left	1
15	A374 3163	Bin Block Shaft - Left	1
16	A374 4617	Small Jogger Stopper	1
17	A374 3525	Cam Roller	4
18	A374 4181	Jogger Lower Holder	1
19	A374 1132	Lower Jogger Stay	1
20	A374 3165	Bin Block Stopper	2
21	A374 4161	Lower Tension Bracket	1
22	A421 2521	Spring - Paper Volume	2
23	AW02 0021	Photointerruptor -175487-3	1
24	AA04 3204	Timing Belt -21 IXL	2
25	A374 4171	Upper Jogger Holder	1
26	A374 4151	Jogger Tension Bracket - Upper	1
27	A374 4131	Jogger Shaft	1
28	A374 1136	Lower Stay	1
29	A374 1142	Shaft - Lower Stay Roller	2
30	A374 1141	Lower Stay Roller	2
31	A374 1145	Lower Stay Bracket	1
32	AB03 2051	Wire Pulley - M26.5	1
33	5053 0419	Bushing - 10mm	3
34	AA06 3240	Jogger - Spring	2
35	AB03 0388	Pulley - 16Z	2

Index No.	Part No.	Description	Q'ty Per Assembly
36	AA08 0140	Bushing - 3x9x5mm	1
37	A374 3521	Bin Roller	4
38	AA08 0142	Bushing - 5x10x4mm	1
101	1105 0234	Clamp	
102	0313 0050B	Phillips Pan Head Screw - M3x5	
103	0720 0030E	Retaining Ring - M3	
104	0720 0040E	Retaining Ring - M4	
105	0951 4006B	Phillips Screw With Washer - M4x6	
106	0434 0060B	Phillips Tapping Screw - M4x6	
107	0951 4008B	Phillips Screw With Washer - M4x8	
108	0633 0250G	Pin - M3x25	
109	0720 0080E	Retaining Ring - M8	
110	1105 0291	Wire Saddle	
111	0950 4006B	Screw - M4x6	

6. COPY TRAY SECTION (A374)



6. COPY TRAY SECTION (A374)

Index No.	Part No.	Description	Q'ty Per Assembly
1	5216 2113	Stepped Screw - Transfer	1
2	A374 3191	Pulley Bracket	1
3	AA06 0490	Limit Switch Spring	1
4	A374 3196	Limit Switch Bracket - Lower	1
5	A374 3555	End Fence Ass'y	20
6	A374 1621	Bin Shaft Cover - Rear	1
7	A374 3176	Front Pulley Bracket	1
8	AA14 3404	Stepped Screw - M4	6
9	AB03 2052	Wire Pulley - M22.8	7
10	A374 3179	Rear Pulley Bracket	1
11	A374 1186	Lower Hinge	1
12	A374 3541	Support Tray	1
13	A374 3550	Bin Link	2
14	A374 1177	Lower Cushion	1
15	A374 4561	Stapler Guide	1
16	A374 3519	Pressuer Guide Mylar	20
17	AA06 6205	End Fence Spring	20
18	A374 3505	Bin Ass'y	20
19	A374 3515	Bin Guide Mylar	20
20	A374 3525	Cam Roller	44
22	A374 3521	Bin Roller	80

Index No.	Part No.	Description	Q'ty Per Assembly
101	1204 2234	Microswitch - AH735254N	
102	0313 0140B	Philips Pan Head Screw - M3x14	
103	0720 0060E	Retaining Ring - M6	
104	0720 0040E	Retaining Ring - M4	
105	0313 0050B	Philips Pan Head Screw - M3x5	
106	0434 0060B	Philips Tapping Screw - M4x6	
107	1105 0267	Wire Clamp	
108	1105 0291	Wire Saddle	
109	1106 0411	Bushing - 11.5mm	

PARTS INDEX

Part No.	Description	Page and Index No.
A374 1131	Upper Jogger Stay	13- 12
A374 1132	Lower Jogger Stay	13- 19
A374 1136	Lower Stay	13-28
A374 1141	Lower Stay Roller	13-30
A374 1142	Shaft - Lower Stay Roller	13-29
A374 1145	Lower Stay Bracket	13-31
A374 1146	Lower Stopper	7- 14
A374 1177	Lower Cushion	15- 14
A374 1186	Lower Hinge	15- 11
A374 1191	Upper Hinge	7- 9
A374 1195	Door Switch Bracket	11-26
A374 1511	Bottom Cover	5- 16
A374 1531	Front Cover Cap	5- 12
A374 1541	Rear Cover	5- 1
A374 1551	Harness Cover	7- 18
A374 1561	Upper Cover	5- 4
A374 1571	Proof Tray	5- 2
A374 1591	Lower Harness Cover	5- 9
A374 1600	Front Cover Ass'y	5- 10
A374 1611	Hinge - Front Cover Cap	5- 11
A374 1621	Bin Shaft Cover - Rear	15- 6
A374 1622	Bin Shaft Cover - Front	11-31
A374 1623	Harness Cover	11-33
A374 1625	opening Handle Bracket	11-29
A374 1700	Opening Handle Ass'y	11-30
A374 1855	Decal - Staple Position MB1 (ADDED)	5-21
A374 1861	Decal - Misfeed Removal MB1 (ADDED)	5- 18
A374 1871	Decal - Staple Misfeed MB1 (ADDED)	5- 19
A374 1881	Decal - Add Staple MB1 (ADDED)	5-20
A374 2121	Entrance Guide Plate - Upper	7- 13
A374 2131	Entrance Guide Plate - Lower	7- 17
A374 2135	Lower Guide Plate Ass'y	7-41
A374 2140	Guide Roller MB1 (ADDED)	7-47
A374 2141	Plate Spring - Upper Cover	5- 7
A374 2151	Vertical Paper Guide	7-44

Part No.	Description	Page and Index No.
A374 2152	Upper Transport Bracket	7- 11
A374 2154	Transport Unit Bracket	7-29
A374 2155	Transport Solenoid Bracket	7- 2
A374 2161	Junction Pawl	7-23
A374 2163	Spring Plate - Lower Transport MB1	7- 15
A374 2168	Solenoid Lever	7- 4
A374 2181	Spacer	7-40
A374 2182	Bracket - Upper Exit Sensor	7- 19
A374 2183	Bracket - Lower Exit Sensor	7-21
A374 2186	Flange - 16Z/20T	7-38
A374 2190	Tightener Bracket	7-35
A374 2200	Tension Arm	7-34
A374 2207	Pulley - 12M	7-36
A374 2216	Encoder	11- 8
A374 2218	Pulley - 12M	11- 10
A374 2234	Encoder Sensor Bracket	11-25
A374 2237	Stepping Motor Bracket	11- 6
A374 2251	Proof Lever	5- 6
A374 2331	Bin Supportor	7-31
A374 2546	Exit Roller	7-28
A374 2547	Exit Belt	7-32
A374 2548	Exit Roller Shaft	7-27
A374 3111	Bin Drive Bracket	11- 2
A374 3115	Encoder Disk	11- 17
A374 3120	Worm Gear Shaft	11- 18
A374 3126	Bin Sensor Bracket	11- 16
A374 3131	Wire Lift Shaft	13- 3
A374 3142	Bin Support Block - Right Front	13- 3
A374 3146	Bin Support Block - Right Rear	13- 10
A374 3156	Bin Support Block - Left	13- 14
A374 3160	Bin Block Shaft - Right	13- 11
A374 3163	Bin Block Shaft - Left	13- 15
A374 3165	Bin Block Stopper	13-20
A374 3176	Front Pulley Bracket	15- 7
A374 3179	Rear Pulley Bracket	15- 10

Part No.	Description	Page and Index No.
A374 3187	Limit Switch Bracket - Upper	11- 12
A374 3191	Pulley Bracket	15- 2
A374 3196	Limit Switch Bracket - Lower	15- 4
A374 3505	Bin Ass'y	15- 18
A374 3515	Bin Guide Mylar	15- 19
A374 3519	Pressuer Guide Mylar	15- 16
A374 3521	Bin Roller	13-37
A374 3521	Bin Roller	15-22
A374 3525	Cam Roller	13- 17
A374 3525	Cam Roller	15-20
A374 3541	Support Tray	15- 12
A374 3550	Bin Link	15- 13
A374 3555	End Fence Ass'y	15- 5
A374 3560	Large Cover - Upper Sensor	7- 1
A374 3562	Small Cover - Upper Sensor	7-30
A374 3570	Sensor Cover	5- 14
A374 4124	Jogger Drive Shaft	13- 5
A374 4131	Jogger Shaft	13-27
A374 4141	Jogger Motor Bracket	13- 8
A374 4151	Jogger Tension Bracket - Upper	13-26
A374 4161	Lower Tension Bracket	13-21
A374 4171	Upper Jogger Holder	13-25
A374 4181	Jogger Lower Holder	13- 18
A374 4521	Stapler Bracket	9- 1
A374 4522	Stapler Rotation Brackdt	9- 4
A374 4531	Stapler Plate	9- 3
A374 4551	Stapler Cover	9- 6
A374 4556	Safety Switch Actuator	5- 13
A374 4561	Stapler Guide	15- 15
A374 4611	Gripper Brackdt	9-26
A374 4616	Jogger Stopper	9-28
A374 4617	Small Jogger Stopper	13- 16
A374 4621	Large Side Plate	9-29
A374 4631	Small Side Plate	9- 10
A374 4636	Drive Shaft	9-24

Part No.	Description	Page and Index No.
A374 4641	Cam Follower	9- 17
A374 4651	Upper Gripper Arm	9- 14
A374 4656	Lower Gripper Arm	9- 16
A374 4666	Drive Cam	9-23
A374 4681	Gripper Shaft	9- 11
A374 4686	Connector Holder	9-25
A374 4688	Gripper Connector Cushion	9-21
A374 4711	Gripper Sensor Bracket	11-27
A374 5100	Main Control Board	11-20
A374 5103	IC - AM27C256-205DC	11-21
A374 5200	Main Harness	11-23
A374 5210	Gripper Harness	9- 19
A374 5220	Gripper Relay Harness	9-22
A374 5230	Transport Harness	7- 12
A374 5240	Bin Sensor Harness	11-22
A374 5250	Relay Harness - Bin Sensor	5- 8
A374 5600	Photointerrupter - OS-580213-704	11-34

Part No.	Description	Page and Index No.
A421 2521	Spring - Paper Volume	13-22
A469 3175	Idle Pulley Stud - Short	13- 6
A498 1831	Staple Position Decal MB1 (ADDED)	5- 17
AA04 3201	Timing Belt - 280XL	7- 6
AA04 3202	Timing Belt - 145XL	11- 9
AA04 3203	Timing Belt - 77XL	11- 3
AA04 3204	Timing Belt -211XL	13-24
AA04 3205	Timing Belt - 83XL	9- 7
AA05 0076	Bin Drive Wire	13- 2
AA06 0488	Spring - Junction Gate	7- 3
AA06 0489	Spring - Solenoid	7-37
AA06 0490	Limit Switch Spring	15- 3
AA06 0491	Upper Pawl Spring	9- 18
AA06 0492	Jogger Stopper Spring	9-27
AA06 3239	Spring - Handle	11-28
AA06 3240	Jogger - Spring	13-34
AA06 6196	Tension Spring	7-33
AA06 6197	Lower Pawl Spring	9- 15
AA06 6198	Proof Lever Spring	5- 5
AA06 6205	End Fence Spring	15- 17
AA08 0071	Bushing - 6x10X6	7-45
AA08 0072	Bushing - 6x10x3	9-31
AA08 0074	Bushing - 4x6x6	9-34
AA08 0140	Bushing - 3x9x5mm	13-36
AA08 0141	Bushing - 5x12x4mm	7-39
AA08 0142	Bushing - 5x10x4mm	13-38
AA08 2042	Bushing - 6x10x6.5mm	9-30
AA12 0052	Antistatic Brush - 62mm	7-43
AA12 0053	Antistatic Brush - 112mm	7-42
AA12 0054	Antistatic Brush - 50mm	7-26
AA12 0055	Antistatic Brush - 367mm	5- 3
AA14 3062	Shoulder Screw - M4	9-33
AA14 3306	Stepped Screw - M6	11-32
AA14 3404	Stepped Screw - M4	15- 8
AB01 1142	Gear -592	9- 8

Part No.	Description	Page and Index No.
AB01 3709	Worm Gear	11- 1
AB01 3730	Gear - 18Z	11- 15
AB01 3731	Gear - 54Z	11- 13
AB01 7273	Sprocket/gear - 16/20Z	7-25
AB01 7274	Gear - 54Z	13- 1
AB01 7275	Coupled Gear - 20/48Z	9- 9
AB03 0386	Pulley -40Z	11- 7
AB03 0387	Pulley - 34Z	7- 10
AB03 0388	Pulley - 16Z	13-35
AB03 0389	Pulley- 16Z	13- 4
AB03 0399	Pulley - 52Z	11- 4
AB03 2051	Wire Pulley - M26.5	13-32
AB03 2052	Wire Pulley - M22.8	15- 9
AF02 0270	Upper Exit Roller	7- 8
AF02 0271	Lower Exit Roller	7-24
AF02 0272	Relay Roller	7-22
AJ01 1005	Stapler Unit	9- 5
AW02 0021	Photointerruptor -175487-3	9-20
AW02 0021	Photointerruptor -175487-3	11-24
AW02 0021	Photointerruptor -175487-3	13-23
AW02 0025	Lower Bin/jam Sensor	5- 15
AW02 0026	Upper Bin/jam Sensor	7- 7
AW02 0049	Photointerruptor -OS -580213-703	7-20
AW03 0028	Fiber Cable	11- 11
AX04 0056	Stepping Motor - DC9.5V 9.0W	9- 12
AX04 0057	Stepping Motor - DC 24V 3.72W	13- 9
AX05 0057	Stepping Motor - DC 24V 3.84W	11- 5
AX05 0058	DC Motor- 24V 9W	11- 19
AX11 0035	Solenoid - 24V 4.6W	7- 5
H014 2131	Bushing - M4	7-46
5053 0419	Bushing - 10mm	13-33
5053 0447	Bushing - 6mm	11- 14
5054 0536	Magnet Catch Ass'y	9- 2
5201 1796	Stepped Screw - M4	7- 16
5201 1796	Stepped Screw - M4	9-32

Part No.	Description	Page and Index No.
5216 2113	Stepped Screw - Transfer	15- 1
5409 1238	Rotary Catch	9- 13
5442 1659	Stepped Screw - M4	9-35
5887 4185	Idler Pulley	13- 7

Part No.	Description	Page and Index No.
0313 0040B	Philips Pan Head Screw - M3x4	7-106
0313 0050B	Philips Pan Head Screw - M3x5	9-109
0313 0050B	Philips Pan Head Screw - M3x5	11-105
0313 0050B	Philips Pan Head Screw - M3x5	13-102
0313 0050B	Philips Pan Head Screw - M3x5	15-105
0313 0080B	Philips Pan Head Screw - M3x8	9-108
0313 0140B	Philips Pan Head Screw - M3x14	9-113
0313 0140B	Philips Pan Head Screw - M3x14	11-107
0313 0140B	Philips Pan Head Screw - M3x14	15-102
0313 0160B	Philips Pan Head Screw - M3x16	5-102
0313 0160B	Philips Pan Head Screw - M3x16	7-111
0314 0040B	Philips Pan Head Screw - M4x4	7-113
0314 0080B	Philips Pan Head Screw - M4x8	7-103
0344 0060F	Philips Truss Head Screw - M4x6	5-106
0344 0060F	Philips Truss Head Screw - M4x6	7-114
0344 0060F	Philips Truss Head Screw - M4x6	11-115
0413 0084W	Tapping Screw M3x8	9-114
0434 0060B	Philips Tapping Screw - M4x6	5-104
0434 0060B	Philips Tapping Screw - M4x6	7-101
0434 0060B	Philips Tapping Screw - M4x6	9-107
0434 0060B	Philips Tapping Screw - M4x6	11-102
0434 0060B	Philips Tapping Screw - M4x6	13-106
0434 0060B	Philips Tapping Screw - M4x6	15-106
0434 0062B	Tapping Screw M4x6	5-101
0434 0062B	Tapping Screw M4x6	7-108
0434 0084B	Tapping Screw - M4x8	5-107
0574 0030E	Hexagonal Set Screw - M4x3	11-104
0574 0040E	Hexagon Headless Set Screw - M4x4	11-108
0623 0100E	Spring Pin - 3x10mm	7-105
0632 0140G	Parallel Pin	9-105
0633 0250G	Pin - M3x25	13-108
0720 0025E	Retaining Ring - M2.5	9-102
0720 0030E	Retaining Ring - M3	7-107
0720 0030E	Retaining Ring - M3	13-103
0720 0040E	Retaining Ring - M4	5-105

Part No.	Description	Page and Index No.
0720 0040E	Retaining Ring - M4	7-104
0720 0040E	Retaining Ring - M4	9-103
0720 0040E	Retaining Ring - M4	11-101
0720 0040E	Retaining Ring - M4	13-104
0720 0040E	Retaining Ring - M4	15-104
0720 0060E	Retaining Ring - M6	15-103
0720 0080E	Retaining Ring - M8	9-101
0720 0080E	Retaining Ring - M8	13-109
0740 3206	Ball Bearing	11-118
0950 4006B	Screw - M4x6	13-111
0951 3006B	Philips Screw With Washer- M4x6	9-104
0951 4006B	Philips Screw With Washer - M4x6	11-103
0951 4006B	Philips Screw With Washer- M4x6	13-105
0951 4008B	Philips Screw With Washer- M4x8	5-103
0951 4008B	Philips Screw With Washer - M4x8	7-102
0951 4008B	Philips Screw With Washer - M4x8	13-107
0953 4008M	Screw - M4x8	7-110
0953 4008M	Screw - M4x8	11-113
1105 0163	Locking Support	11-110
1105 0234	Clamp	7-112
1105 0234	Clamp	9-112
1105 0234	Clamp	11-111
1105 0234	Clamp	13-101
1105 0267	Wire Clamp	11-109
1105 0267	Wire Clamp	15-107
1105 0291	Wire Saddle	7-109
1105 0291	Wire Saddle	11-112
1105 0291	Wire Saddle	13-110
1105 0291	Wire Saddle	15-108
1105 0310	Wire Clamp	9-106
1106 0241	Bushing - 6.7mm	9-111
1106 0241	Bushing - 6.7mm	11-117
1106 0411	Bushing -11.5mm	15-109
1107 0748	Fuse - 2A, 250V	11-116
1204 2188	Interlock Switch	9-110

Part No.	Description	Page and Index No.
1204 2188	Interlock Switch	11-114
1204 2233	Microswitch - AH715254N	11-106
1204 2234	Microswitch - Ah735254n	15-101